

Lillington Nursery and Primary School



Head Teacher to Home – 20th January What has happened in school this week?

Welcome to this week's newsletter!

We have had another week of children working hard,
having fun and learning.

Monday was Martin Luther King Day so our Monday assembly was about his life and how he campaigned for racial and economic equality. King Class (one of the year 6 classes) is named after Martin Luther King, so it was a good chance for the children to learn about him.

As well as the usual daily reading, writing and maths lessons, the children have been involved in a broad range of exciting foundation subject activities. Children have been busy doing some amazing artwork, rigorous physical activity, complicated computing and a range of geography and history activities. Hopefully you'll enjoy the photos of everyone in action this week.

The school value that we're focusing on through January is honesty. Staff members will be looking for examples of honesty in lessons as well as at playtime, lunchtime and during any school clubs. We really value honesty because to live and work together, we need to be able to trust each other.

Our assemblies this week have focused on democracy. Next week, we will be talking about the Chinese New Year during our assemblies.

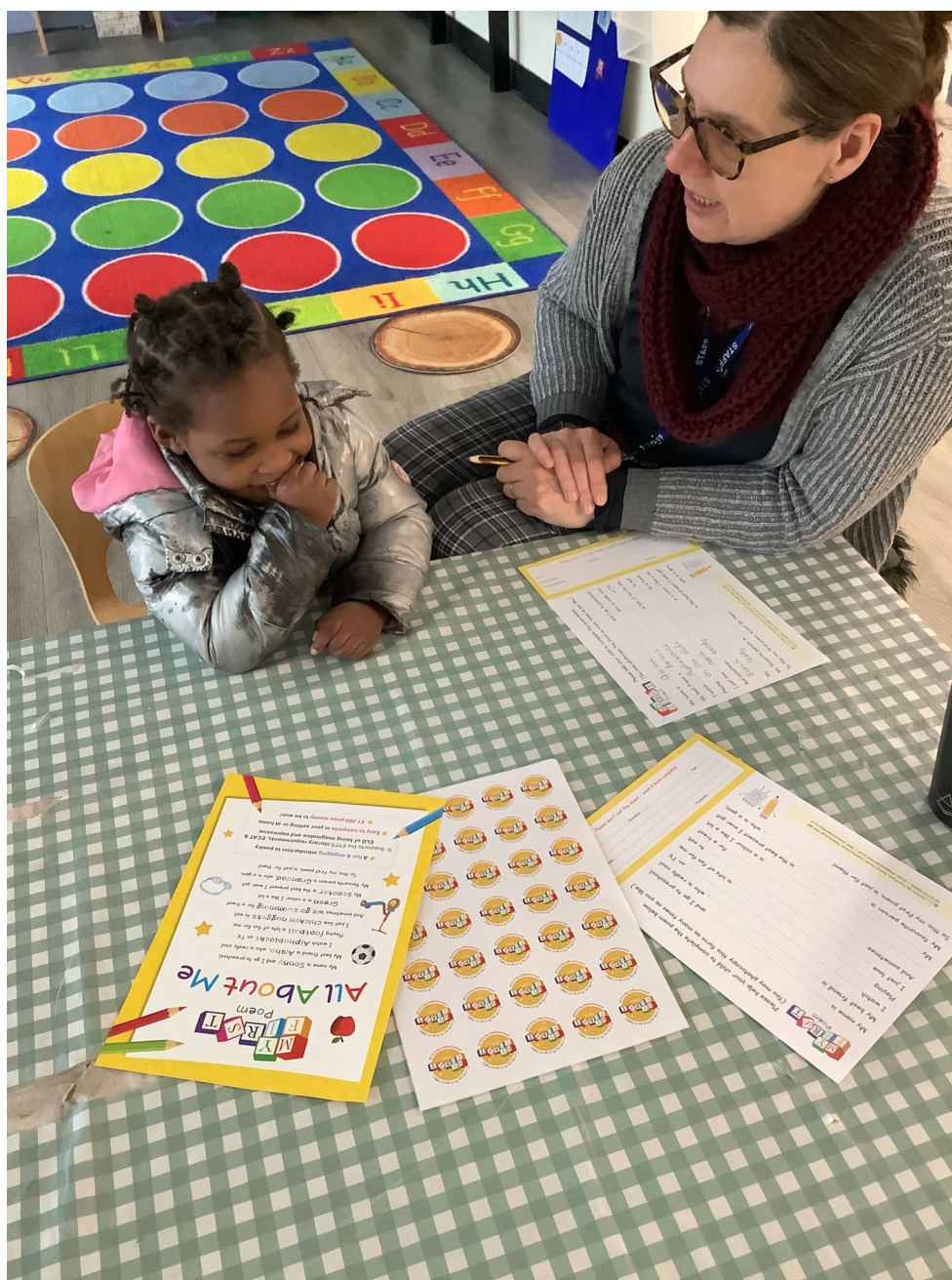
Enjoy your weekend and see you all on Monday.

Lillington Nursery and Primary School



Head Teacher to Home – 20th January What has happened in school this week?

This week, Nursery entered The Preschool Poetry competition. We chose key words to add to a template. Fingers crossed we win the £1000 prize and receive a published copy of our poems!



Lillington Nursery and Primary School



Head Teacher to Home – 20th January What has happened in school this week?

Reception have had a great time discovering huge pieces of ice in the garden and smashing it up with hammers. They added paint too to see what would happen.



Lillington Nursery and Primary School



Head Teacher to Home – 20th January What has happened in school this week?



Darwin put their acting skills to the test by simulating a 'TV interview' with the palace guard from our model text. The children took it in turns to be the TV presenter and the palace guard, asking and answering questions about what they witnessed on Paddington's day out. The children were able to use inference from the model text to come up with answers and questions.

Lillington Nursery and Primary School



Head Teacher to Home – 20th January What has happened in school this week?

Children in Peake Class have settled into some new reading routines this week. They have been practising how to log in and complete comprehension quizzes and are very proud of their independence!



Lillington Nursery and Primary School



Head Teacher to Home – 20th January What has happened in school this week?

This week, Year 3 learned all about Mary Anning, a famous palaeontologist. After doing some research from secondary sources, they were tasked with writing a fact file about her career and legacy.

MARY ANNING

DATE OF BIRTH: 1799
DATE OF DEATH: 1847

MARY ANNING'S CAREER AS A PALAEOLOGIST
Mary started learning all about fossils. Mary was helping her dad and brother. They found lots of fossils. In 1821 Mary found a nice Ichthyosaurus fossil. Two years later she found a first Plesiosaurus fossil. Her gender affected her work, of being a palaeontologist. A lady called Elizabeth gave her some books to learn from.

A PICTURE OF MARY ANNING

WHY IS SHE SO IMPORTANT?
because she found lots of interesting fossils. Including a (Ichthyosaurus and a plesiosaurus). She was one of a female palaeontologist.

MARY ANNING

DATE OF BIRTH: 1799
DATE OF DEATH: 1847

MARY ANNING'S CAREER AS A PALAEOLOGIST
Mary taught herself about fossils, including in her being the best fossil hunter. even some of her biggest finds were Ichthyosaurus and people don't give money for them which was good as her family was poor. She saved her first fossil at the age of twelve.

A PICTURE OF MARY ANNING

WHY IS SHE SO IMPORTANT?
She then's finds changed scientists' thinking.

MARY ANNING

DATE OF BIRTH: 1799
DATE OF DEATH: 1847

MARY ANNING'S CAREER AS A PALAEOLOGIST
Mary Anning started her career with her dad and brother. She sold fossils for £ until she found a Ichthyosaurus. It took months to unearth the Ichthyosaurus but eventually it was unearthed. So after it was sold for 25 pounds.

A PICTURE OF MARY ANNING

WHY IS SHE SO IMPORTANT?
Mary Anning found fossils like Plesiosaurus and Ichthyosaurus. The fossils changed thinking.

MARY ANNING

DATE OF BIRTH: 1799
DATE OF DEATH: 1847

MARY ANNING'S CAREER AS A PALAEOLOGIST
She started to work with her father and brother. And she shared her discoveries with other. As she even opened a shop and one day when she had work at her shop some lady asked Mary if she wanted to see her fossils. Then the lady gave Mary Anning some books about fossils.

A PICTURE OF MARY ANNING

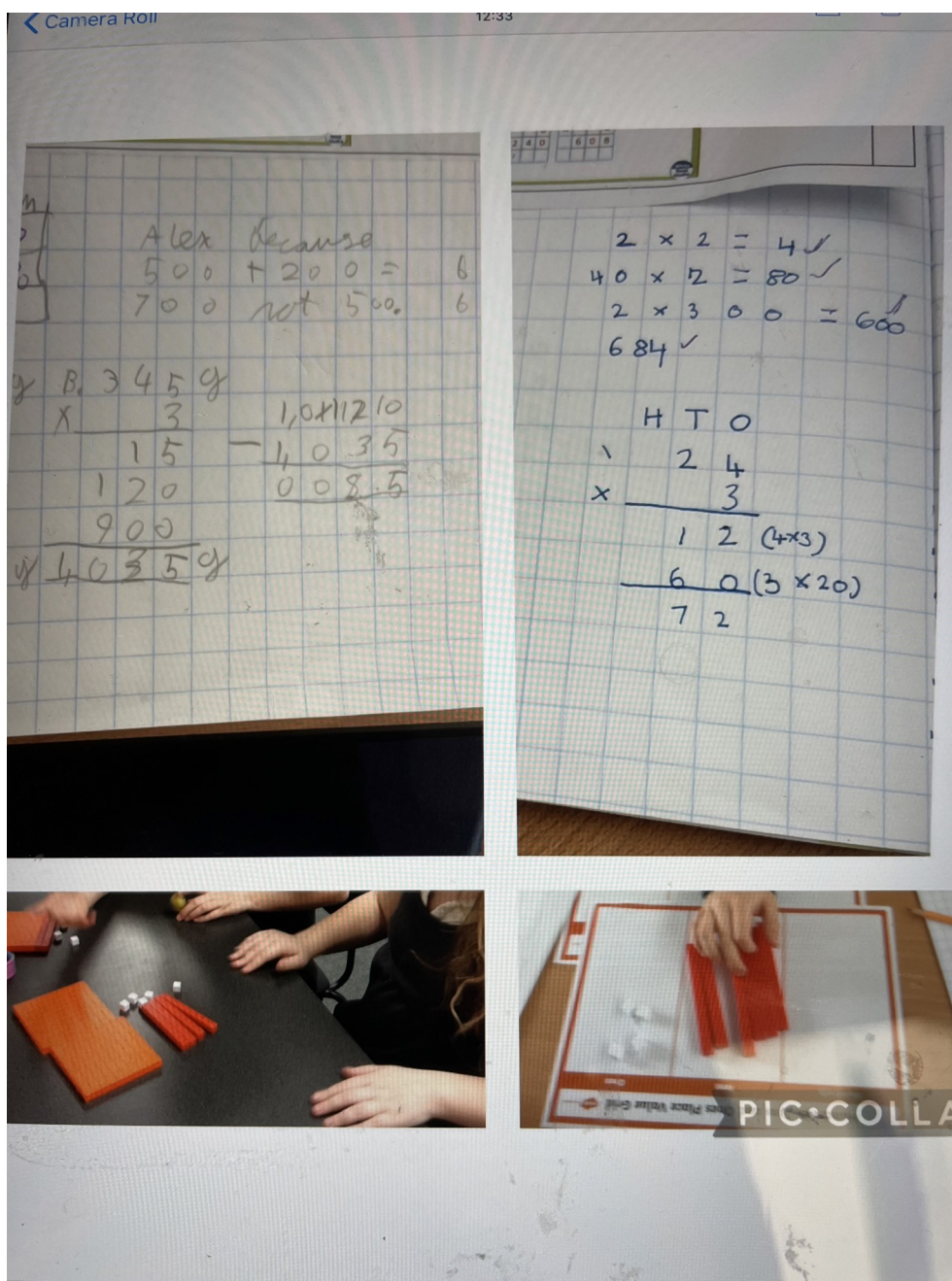
WHY IS SHE SO IMPORTANT?
If she didn't find them fossils we wouldn't know what dinosaurs.

Lillington Nursery and Primary School



Head Teacher to Home – 20th January What has happened in school this week?

Year 4 have been learning to multiply 2 and 3 digit numbers this week. It has been very tricky but we have worked really hard.



Lillington Nursery and Primary School



Head Teacher to Home - 20th January What has happened in school this week?

Pankhurst have loved starting to learn some new dance moves in PE this week. They've learnt a variety of spins and started to learn the hand jive.



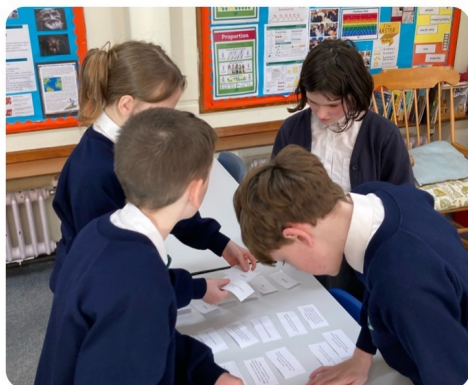
PIC•COLLAGE

Lillington Nursery and Primary School



Head Teacher to Home - 20th January What has happened in school this week?

This week, the children in Angelou have been predicting and researching a range of scientific vocabulary relating to the stages and processes within mammalian and, more specifically, human life cycles. After a range of intricate sorting and note-taking activities, they went on to recreate, draw and label the life cycle of a human with superb detail and precision.



Lillington Nursery and Primary School



Head Teacher to Home - 20th January What has happened in school this week?

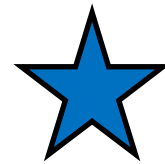
It's been an incredibly busy week in King Class. On Monday, the children were looking at road traffic accident statistics. After being given statistics in a table, the children had to create graphs on the computers so they could see patterns in the data. During their art lessons, the children have been creating tints, shades and tones of pure colours using white, black and grey. Here are some pictures of them in action.



Lillington Nursery and Primary School



Head Teacher to Home - 20th January
What has happened in school this week?



School Information

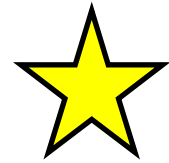
There will be a non uniform day on Friday 10th February for **Children's Mental Health Week** (voluntary donations of £1)



Lillington Nursery and Primary School



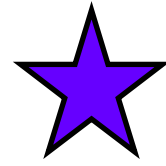
Head Teacher to Home - 20th January
What has happened in school this week?



CELEBRATION!

Overall attendance this week was 92.7%

Congratulations to Darwin class who had the highest attendance in Key Stage 1 this week!



Congratulations to Hopper Class who had the highest attendance in Key Stage 2 this week!



Lillington Nursery and Primary School



Head Teacher to Home - 20th January What has happened in school this week?

Lunch Menu

Educaterers Lunch Menu Week 3

Coventry and Warwickshire: 19/9, 10/10, 31/10, 21/11, 12/12, 2/1/23, 23/1, 13/2, 6/3.
Leicestershire: 29/8, 19/9, 10/10, 31/10, 21/11, 12/12, 2/1/23, 23/1, 13/2, 6/3.
Oxfordshire: 19/9, 10/10, 31/10, 21/11, 12/12, 2/1/23, 23/1, 6/3.

Meat Free Monday



Cheese and Tomato Pizza D.G.

or



(v) Veg Korma M.D.E.

or



(v) Cheese/Beans D.

or



(v) Cheddar Cheese G.D.

Jacket Potatoes Every Day

or



(v) Cheese D.

or



British Roast Chicken G.

or



Tuna Mayonnaise F.E.

or



Tuna Mayonnaise F.E.G.

Tuesday



Pork Sausages G.S.U.

or



(vg) Chinese Style Plant Based "Meat"balls
Noodles contain Gluten

Wednesday



Roast Beef in Gravy, York Pud D.E.G.

or



(vg) Quorn Roast G.
(v)Yorkshire Pudding D.E.G.

Thursday



Chicken Fajita Wrap G.

or



(v) Mac 'n' Cheese G.D.

Friday



Breaded Fish Fillet Fingers F.

or



(vg) Breaded Vegetable Fingers G.

Week 3 Dessert Menu

Every day we offer:

(v) Yoghurt, (D.)
or fresh fruit as alternative dessert options

Monday

(vg) Homemade Chocolate Cracknel

Tuesday

(v) Chocolate or Strawberry Swirl Mousse D.
(vg) Homemade Fruity Flapjack G.

Wednesday

(v) Homemade Iced Sponge
with Sprinkles G.E. and Custard D.

Thursday

Jelly with Fruit
(vg) Homemade Carrot and
Orange Cookie G.

Friday

(v) Cheddar Cheese, Crackers and Apple
Slices G,D
(v) Ice Cream Tub D.

All our meals include a carbohydrate accompaniment, seasonal vegetables and/or salad. We offer a choice of fruit juice cordial, semi skimmed milk or water to drink. Some schools offer a Hydration Station instead, comprising of unlimited chilled water flavoured with fresh fruit.

Accompaniments may vary to those shown.

PLEASE NOTE some schools serve the cold option in a deli bag with vegetable sticks or salad, a dessert and a drink

Key

vg = vegan

V = vegetarian

D = Dairy

N = Coconut/Nuts

S = Sesame

E = Egg

G = Gluten/Wheat

F = Fish

M = Mustard

SB = Soya

SU = Sulphites



Egg Mayonnaise G.E.

Lillington Nursery and Primary School



Head Teacher to Home –20th January
What has happened in school this week?

 RAMBLERS

**WELLBEING
WALKS**

Better wellbeing is just
a step away

Royal Leamington Spa LILLINGTON LIBRARY



Where	Lillington Library, Valley Road, Lillington, CV32 7SJ
When	First Saturday of every month from 7 January 2023, at 10.30am
How long	1 Hour How Far? 1 mile, depending on ability
What do I need	Just yourself and some sturdy shoes/waterproof clothing Returning to Lillington Community Centre for tea/coffee

Royal Leamington Spa LILLINGTON CHILDREN'S CENTRE

Where	Lillington Children's Centre, 3 Mason Avenue, Lillington, CV32 7QE
When	Every Monday from 9 January 2023, at 9am
How long	1 Hour How Far? 1 mile, depending on ability
What do I need	Just yourself and some sturdy shoes/waterproof clothing Returning to Acorn Court Community Café for tea and toast



Joanna Dagg
T. 01926 456004 M. 07912 774529 E. joanna.dagg@warwickdc.gov.uk

 @healthywalks  Wellbeing Walks in Warwick District